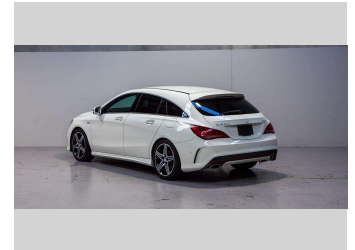
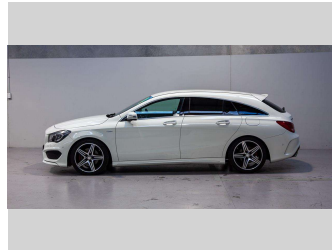
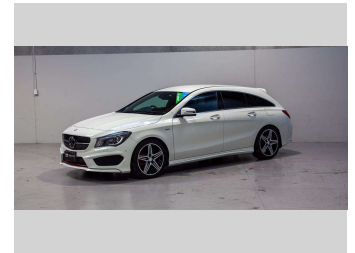
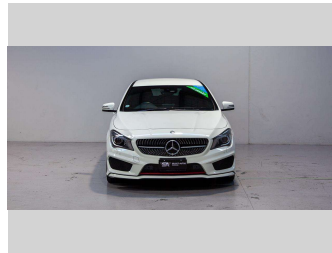


2015 Mercedes-Benz CLA 250 AMG Shooting Brake




Purchase Price **\$18,990**

Includes GST
Excludes on-road costs of \$595

Indicative repayments

\$82.95 per week*

Based on a 60 month term & 20% deposit.
Total repayments (260) = **\$25,484.32**



Gain peace of mind with
Mechanical Breakdown
Insurance. **Ask us how.**



an ASSURANT company

Top features

- » 18" Alloy Wheels
- » 5 Star Ancap Safety Ra...
- » Blind Spot Sensors
- » Child seat anchor poin...
- » Cruise Control
- » Curtain SRS Air Bags
- » Face Lift Model
- » Front SRS Airbags
- » Heated Seats
- » Multi Function Steerin...
- » Parking Assist
- » Parking Sensors
- » Rain Sensing Wipers
- » Reversing Camera

Body Style
5 door, Station Wagon

Odometer
101,712 km

Engine
2000 cc, Internal Combustion

Fuel Type
Petrol

Transmission
Automatic

Wheels
-

VIN
WDD1179512N295657

Interior
Black, Cloth

Safety
-

Reg No.
-

Ext Colour
White

History
-

Seats
5 seats, Leather

CO2 Emissions
-

Energy Economy
-

Stock ID: 1430



Select Autos Tauranga | Phone 07 390 0994 | Email
elliott@selectautostauranga.co.nz
28 Whiore Avenue, Tauriko, Tauranga 3171, New Zealand
www.selectautostauranga.co.nz

* Select Autos Tauranga is not a lender nor a financial adviser. Any amounts displayed should not be seen as an offer of finance or taken as financial advice. The interest rate, fees and loan term used in this calculation may not actually represent those available from lenders. Actual interest rates, fees and loan terms will vary per lender and are typically based on an assessment of your credit risk and responsible lending criteria. Any repayment amounts displayed are indicative only and have been calculated using several other indicative inputs. The interest rate used in this calculation is an arbitrary 11.99%, however exact interest rates vary per lender. The term of the loan used in this calculation is 60 months. Exact terms available vary per lender although options typically include 6, 12, 18, 24, 36, 48 and 60 months. This calculation also includes a typical mandatory fee charged by lenders. This is a one-off establishment fee of \$495.00. Typically, this fee can be paid upfront or, as in this calculation, be capitalised over the contract term, ie. included in the loan amount. This fee can vary per lender and other non-mandatory fees and charges may also apply. The total amount of repayments has been calculated by multiplying 260 weekly repayments (based on a 60 month term) by the weekly repayment amount of \$82.95 which equals \$25,484.32. This calculator does not consider any of your own personal circumstances and we strongly suggest you seek budgeting advice prior to committing to any loan contract. Responsible lending criteria and lender terms and conditions will likely apply to any finalised loan contract. Proof of security and/or vehicle insurance may also be required before proceeding.